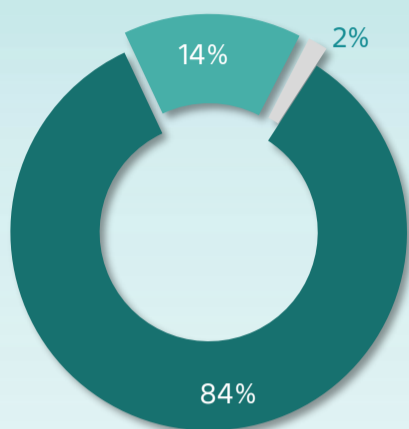
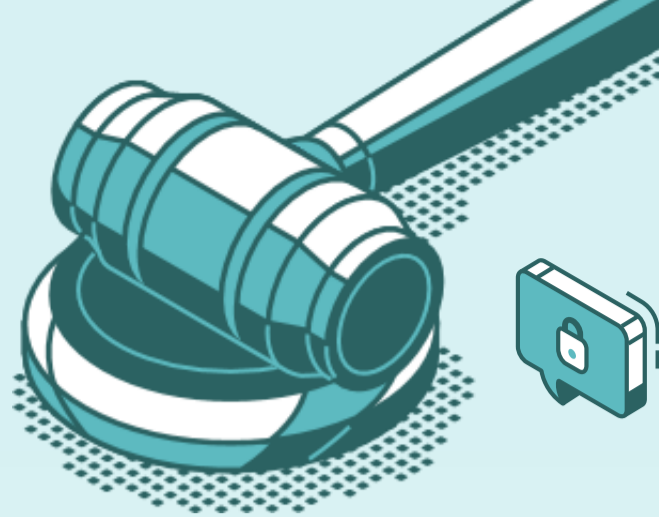


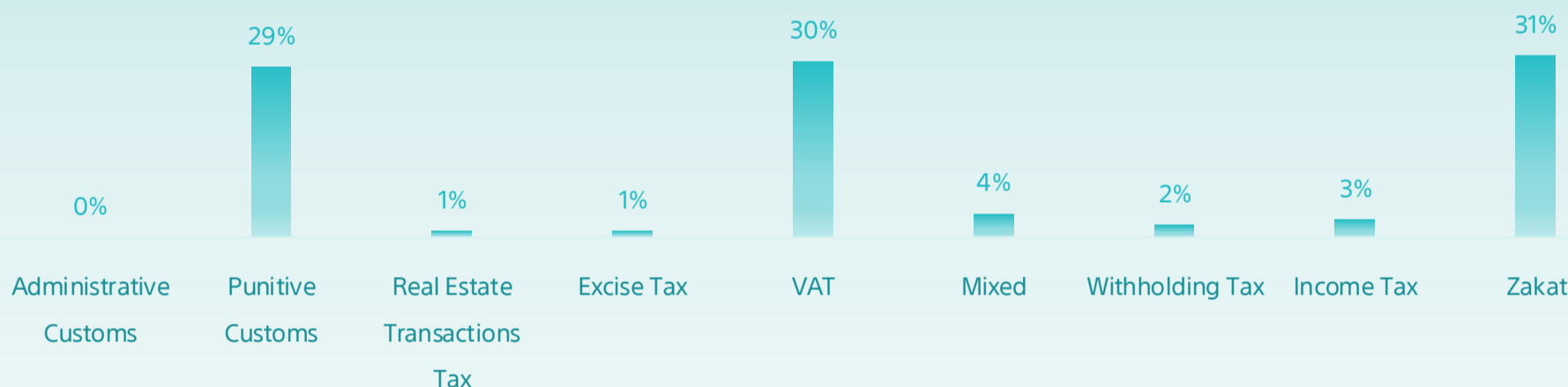
All Cases Report

Until Apr 2023



Initial Appeal Reconsider

Classification	Initial	Appeal	Reconsider	Total
Zakat	37,966	9,281	1,354	48,601
Income Tax	3,308	930	82	4,320
Withholding Tax	1,905	737	73	2,715
Mixed	4,509	1,285	102	5,896
VAT	40,133	6,612	712	47,457
Excise Tax	690	216	14	920
Real Estate Transactions Tax	1,160	132	15	1,307
Punitive Custom	41,472	3,436	182	45,090
Administrative Customs	366	147	17	530
Total	131,509	22,776	2,551	156,836



Top cases classification / type



Fine (VAT)
12%



Tax Assessment-
Discretion (Zakat)
15%



Tax Assessment-
Accounts (Zakat)
16%



Tax Return & Fine (VAT)
9%



Disposing of a restricted cleared merchandise
with a pledge not to dispose of.
(Customs)
18%

